



**REGIONAL SPECIALISED METEOROLOGICAL CENTRE-TROPICAL CYCLONES, NEW DELHI
SPECIAL TROPICAL WEATHER OUTLOOK**

DEMS-RSMC TROPICAL CYCLONES NEW DELHI DATED 15.07.2025

SPECIAL TROPICAL WEATHER OUTLOOK FOR NORTH INDIAN OCEAN (THE BAY OF BENGAL AND THE ARABIAN SEA) VALID FOR NEXT 168 HOURS ISSUED AT 0730 UTC OF 15.07.2025 BASED ON 0300 UTC OF 15.07.2025.

**SUB: (A) WELL MARKED LOW PRESSURE AREA OVER NORTH JHARKHAND AND ADJOINING SOUTH BIHAR
(B) DEPRESSION OVER CENTRAL PARTS OF NORTH RAJASTHAN**

(A) WELL MARKED LOW PRESSURE AREA OVER NORTH JHARKHAND AND ADJOINING SOUTH BIHAR

THE DEPRESSION OVER JHARKHAND AND NEIGHBOURHOOD MOVED WEST-NORTHWESTWARDS, WEAKENED INTO A WELL MARKED LOW PRESSURE AREA AND LAY OVER NORTH JHARKHAND AND ADJOINING SOUTH BIHAR AT 0300 UTC OF TODAY, THE 15TH JULY 2025.

IT IS LIKELY TO MOVE FURTHER WEST-NORTHWESTWARDS ACROSS JHARKHAND AND ADJOINING SOUTH BIHAR TOWARDS EAST UTTAR PRADESH DURING NEXT 24 HOURS.

AS PER INSAT 3DS IMAGERY, AT 0300 UTC OF 15TH JULY 2025 SCATTERED TO BROKEN LOW/MEDIUM CLOUDS WITH EMBEDDED INTENSE TO VERY INTENSE CONVECTION OVER EAST UTTAR PRADESH BIHAR JHARKHAND CHHATTISGARH ODISHA GANGETIC WEST BENGAL SUB HIMALAYAN WEST BENGAL SIKKIM BANGLADESH EAST MADHYA PRADESH NORTHEASTERN STATES AND NORTH BAY OF BENGAL (MINIMUM CLOUD TOP TEMPERATURE IS 70-90 °C).

(B) DEPRESSION OVER CENTRAL PARTS OF NORTH RAJASTHAN

THE WELL MARKED LOW PRESSURE AREA OVER CENTRAL PARTS OF NORTH RAJASTHAN MOVED SLOWLY WEST-NORTHWESTWARDS, CONCENTRATED INTO A DEPRESSION OVER THE SAME REGION AT 0300 UTC OF TODAY, THE 15TH JULY, 2025 NEAR LATITUDE 27.4°N AND LONGITUDE 75.4°E ABOUT 40 KM SOUTHEAST OF SIKAR AND 110 KM SOUTH-SOUTHEAST OF CHURU.

IT IS LIKELY TO CONTINUE TO MOVE SLOWLY WEST-NORTHWESTWARDS ACROSS NORTH RAJASTHAN DURING NEXT 24 HOURS.

AS PER INSAT 3DR IMAGERY, AT 0300 UTC OF 15th JULY 2025 SCATTERED TO BROKEN LOW/MEDIUM CLOUDS WITH EMBEDDED INTENSE TO VERY INTENSE CONVECTION OVER NORTH RAJASTHAN (MINIMUM CLOUD TOP TEMPERATURE IS 70-90 °C) AND MODERATE TO INTENSE CONVECTION OVER EAST PUNJAB WEST HARYANA (MINIMUM CLOUD TOP TEMPERATURE IS 50-60 °C)

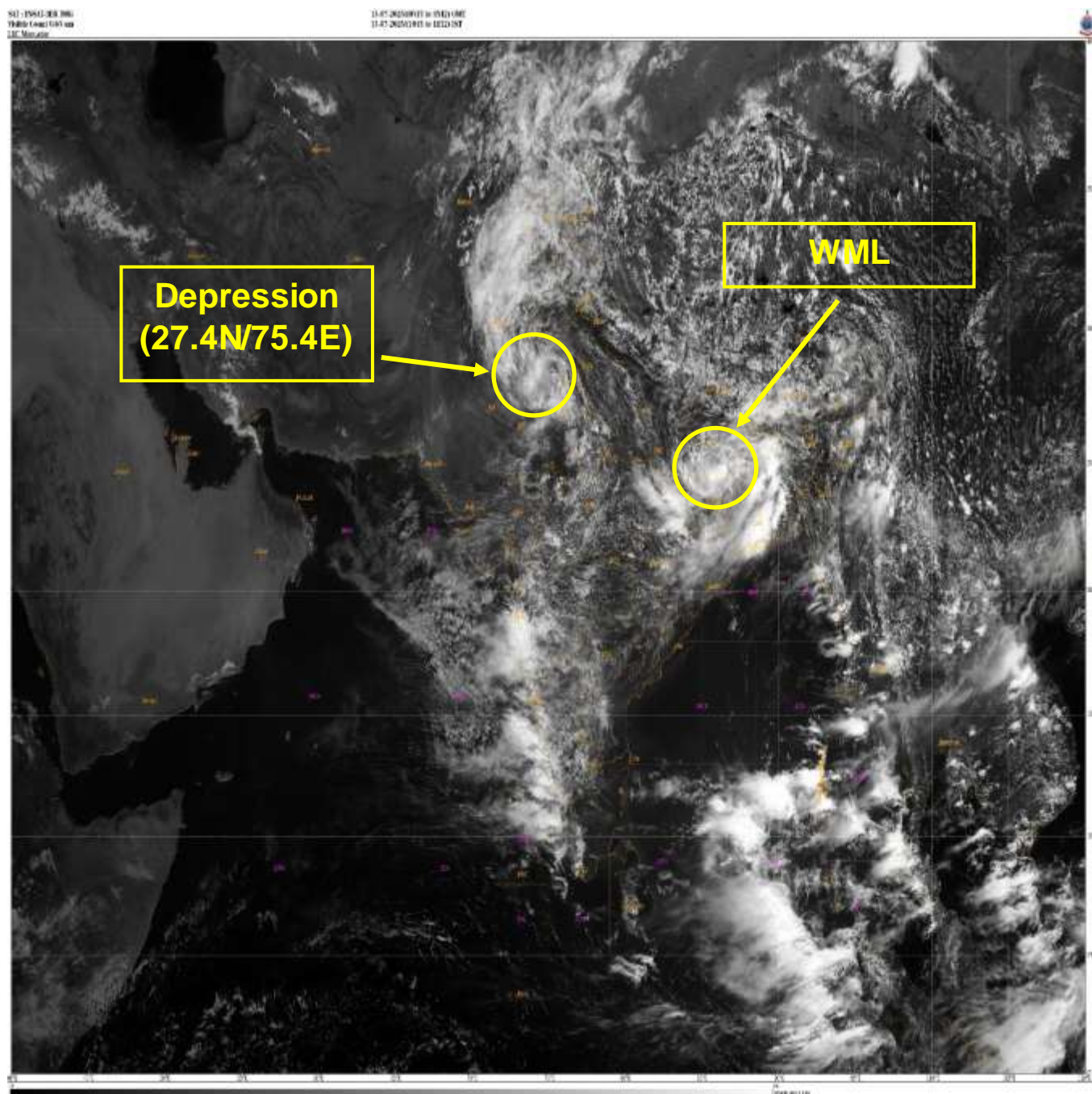
WARNINGS:

WIND WARNING:

- SQUALLY WIND SPEED REACHING 40-50 KMPH GUSTING TO 60 KMPH IS LIKELY TO PREVAIL OVER NORTH RAJASTHAN AND ADJOINING HARYANA & NORTHWEST MADHYA PRADESH FOR NEXT 24 HOURS, AND OVER NORTHWEST RAJASTHAN & NEIGHBOURHOOD FOR SUBSEQUENT 24 HOUR.
- SQUALLY WIND SPEED REACHING 30-40 KMPH GUSTING TO 50 KMPH IS LIKELY OVER BIHAR, JHARKHAND, NORTH CHHATTISGARH, NORTH ODISHA AND ADJOINING GANGETIC WEST BENGAL DURING NEXT 24 HOURS.

REMARKS : UNDER THE INTERACTION OF MIDDLE TROPOSPHERIC WESTERLY TROUGH WITH THE WELL MARKED LOW PRESSURE AREA OVER CENTRAL PARTS OF NORTH RAJASTHAN, THE SYSTEM HAS INTENSIFIED INTO A DEPRESSION OVER THE SAME REGION.

(D R PATTANAİK)
HEAD RSMC, NEW DELHI



WML – Well Marked Low Pressure Area



OBSERVED AND FORECAST TRACK OF DEPRESSION OVER NORTH JHARKHAND AND ADJOINING SOUTH BIHAR AT 0300 UTC (0830 HRS IST) OF 15th JULY 2025

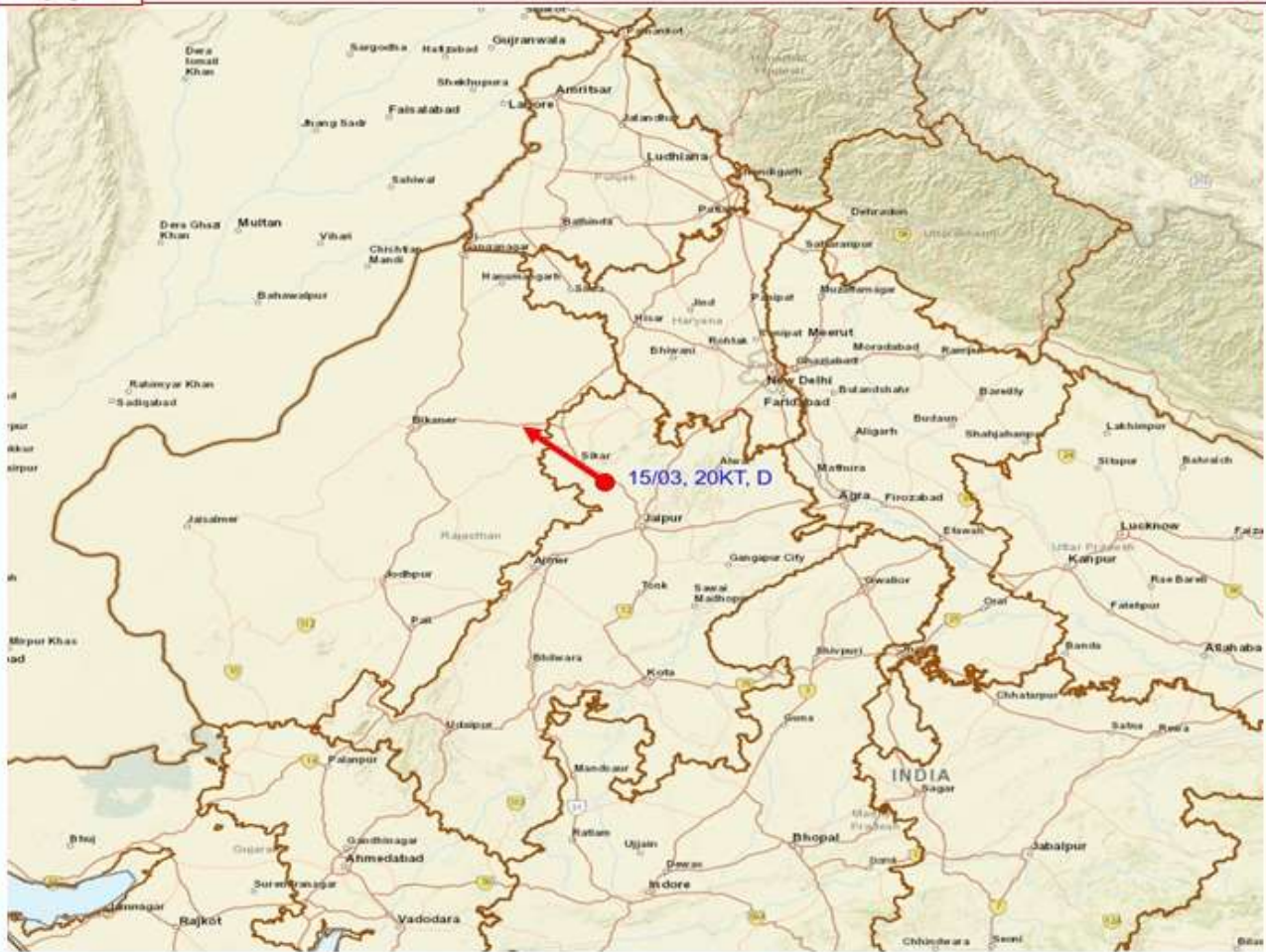


DATE/TIME	: IN UTC
IST	: UTC + 0530
KT	: NAUTICAL MILES/HOUR = 1.85 KM/HOUR
LPA	: LOW PRESSURE AREA
WML	: WELL MARKED LOW PRESSURE AREA
D	: DEPRESSION (17-27 KT)
DD	: DEEP DEPRESSION (28-33 KT)
CS	: CYCLONIC STORM (34-47 KT)
SCS	: SEVERE CYCLONIC STORM (48-63 KT)
VSCS	: VERY SEVERE CYCLONIC STORM (64-89 KT)
ESCS	: EXTREMELY SEVERE CYCLONIC STORM (90-119 KT)
SuCS	: SUPER CYCLONIC STORM (≥120 KT)

●	LESS THAN 34 KT
⬮	34-47 KT
⬮	≥ 48 KT
—	OBSERVED TRACK
—	FORECAST TRACK
▲	CONE OF UNCERTAINTY



OBSERVED AND FORECAST TRACK OF DEPRESSION OVER CENTRAL PARTS OF NORTH RAJASTHAN ON 0300 UTC (0830 Hrs. IST) OF 15th JULY 2025



DATE/TIME	: IN UTC
IST	: UTC + 0530
KT	: NAUTICAL MILE/HOUR = 1.85 KM/HOUR
LPA	: LOW PRESSURE AREA
WML	: WELL MARKED LOW PRESSURE AREA
D	: DEPRESSION (17-27 KT)
DD	: DEEP DEPRESSION (28-33 KT)
CS	: CYCLONIC STORM (34-47 KT)
SCS	: SEVERE CYCLONIC STORM (48-63 KT)
VSCS	: VERY SEVERE CYCLONIC STORM (64-89 KT)
ESCS	: EXTREMELY SEVERE CYCLONIC STORM (90-119 KT)
SuCS	: SUPER CYCLONIC STORM (≥120 KT)

	LESS THAN 34 KT
	34-47 KT
	≥ 48 KT
	OBSERVED TRACK
	FORECAST TRACK
	CONE OF UNCERTAINTY

Fishermen Warning Graphics

